

Queensland Labour Market and Workplace Briefing

Three months to 30 June 2008

Released August 2008

Labour Market Analysis Team

Strategic Projects and Performance Management

Queensland **the Smart State**

Released August 2008



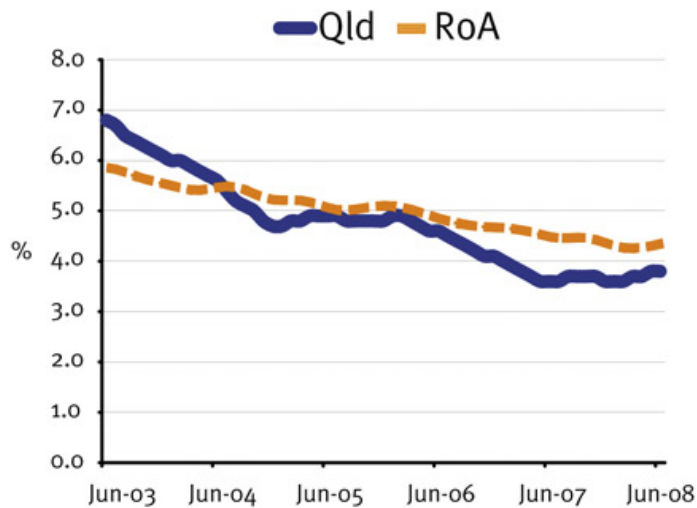
**Queensland
Government**
Department of
Employment and
Industrial Relations

Labour market

Labour market overview

The Queensland labour market continues to experience record low unemployment, along with high employment and labour force participation. During June 2008, Queensland's trend unemployment remained steady at 3.8%, well below the 4.3% recorded in the Rest of Australia. In Queensland the number of unemployed persons rose by 1,400 persons to 86,700, while in the Rest of Australia unemployed persons rose by 4,100 persons to 387,500.

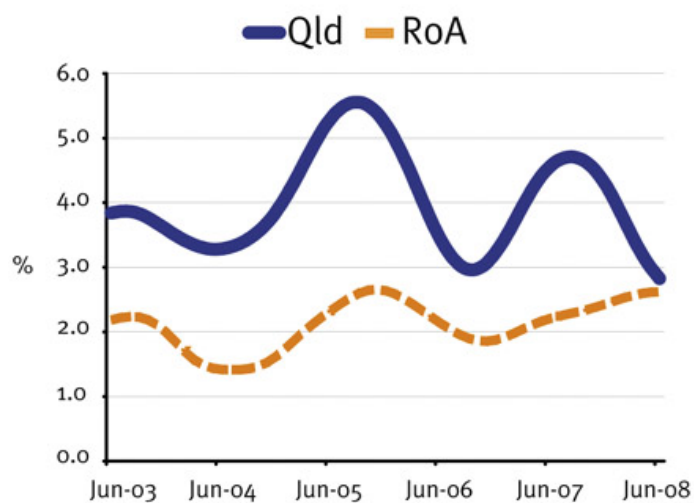
Unemployment rate - monthly, Queensland and the rest of Australia (%)



Source: ABS 6202.0

In June 2008 total employment in Queensland increased 2.8% (or 59,300 persons) in annual average terms. This remains above the 2.6% growth recorded in the Rest of Australia. In annual average terms, full-time job growth in Queensland (2.4%, or 36,500 persons) exceeded part-time job growth (4.0%, or 22,800 persons) over the same period. The labour force participation rate (67.1% annually) remains steady compared to the year to June 2007.

Employment growth – annual average, Queensland and the rest of Australia (%)

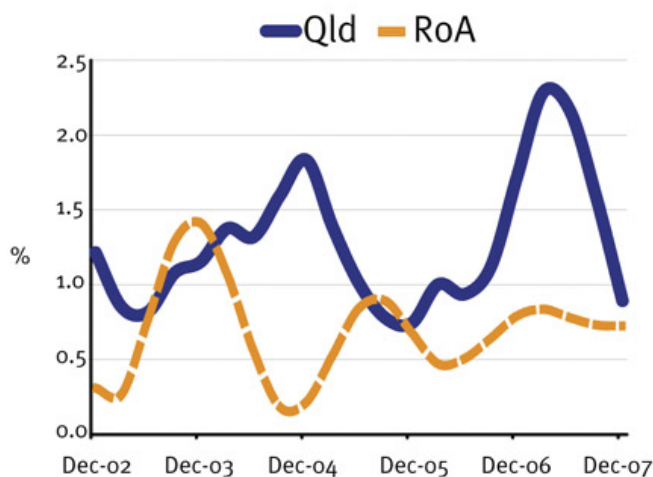


Source: ABS 6202.0

Economic growth

Queensland's trend growth in real gross state product (GSP) eased to 0.9% in December quarter 2007, marginally higher than the 0.7% growth recorded in the Rest of Australia. Domestic economic activity continued to support Queensland economic growth, with gross state expenditure rising 0.7 per cent. Net exports had a small positive impact on Queensland economic growth in the December quarter, as declining export growth (-0.1%) was more than offset by falling import growth (-0.4%).

Real GSP growth – quarterly, Queensland and Rest of Australia (%)



Source: Qld Treasury State Accounts

In annual terms the Queensland economy grew by a strong 7.2% over the year to December quarter 2007, more than double the 3.0% growth for the Rest of Australia. While domestic economic activity was again the major contributor to Queensland growth (8.1%), on the trade side net exports detracted from GSP growth over the year, as an increase in exports (3.1%) was more than offset by higher imports (6.1%).

Productivity, participation and population

To analyse the sources of economic growth in Queensland, the Productivity-Participation-Population (PPP) accounting framework is employed here. This framework decomposes economic activity into four components: labour productivity, hours worked, employment and labour force participation. Economic activity is measured using Gross State Product (GSP), or output, per capita. Definitions of these components are provided in the text box below.

In the December quarter 2007, trend output per capita in Queensland grew by 4.6% in annual average terms, well above the 1.4% growth recorded in the Rest of Australia. Stronger growth in Queensland over this period was firstly underpinned by significant gains in both labour productivity and participation relative to the Rest of Australia. Secondly, average hours worked fell more significantly in the Rest of Australia compared to Queensland.

PPP components – annual average growth rates, December quarter 2007 (%)¹

	Queensland	Rest of Australia
Labour productivity	3.4	2.5
Labour utilisation	1.3	-0.8
Employment	0.8	0.4
Participation	1.2	0.7
Hours worked	-0.7	-1.9
Real GSP per capita	4.7	1.7

¹ Growth rates may not add due to rounding.

Source: ABS 6202.0; Qld Treasury State Accounts

The contribution of the components of the PPP framework to economic growth is shown below. This data shows that, for the year ending December quarter 2007, increased labour force productivity is the primary driver of economic activity across Australia. In Queensland, growth in labour utilisation (due to growth in employment and participation) also contributed positively to economic growth. In the Rest of Australia, however, labour utilisation detracted from economic growth, as a reduction in average hours worked overshadowed gains in employment and participation.

Contribution to GSP growth per capita, December quarter 2007 (%)

Annual average, December quarter 2007

	Queensland	Rest of Australia
Labour productivity	72.3	147.1
Labour utilisation	27.7	-47.1
Employment	17.0	23.5
Participation	25.5	41.2
Hours worked	-14.9	-111.8
Real GSP per capita	100.0	100.0

Source: ABS 6202.0; Qld Treasury State Accounts

The components used in the PPP methodology include:

1. economic activity – gross state product (GSP) per capita;
2. labour productivity – this is the ratio of output per unit of labour input (total hours worked);
3. hours worked – this is the ratio of total hours worked to employed persons. It represents average hours worked per worker over a given time period (here one quarter);
4. employment – this is the ratio of employed persons to the labour force. It is the complement of the unemployment rate; and
5. participation – this is the proportion of the population that are participating in the labour force.

Labour productivity

Queensland labour productivity fell over the December quarter 2007 in both Queensland (1.2%) and the Rest of Australia (0.2%). Annually, however, labour productivity growth rose across Australia, with the rise in Queensland (3.4%) higher than the rise in the Rest of Australia (2.6%).

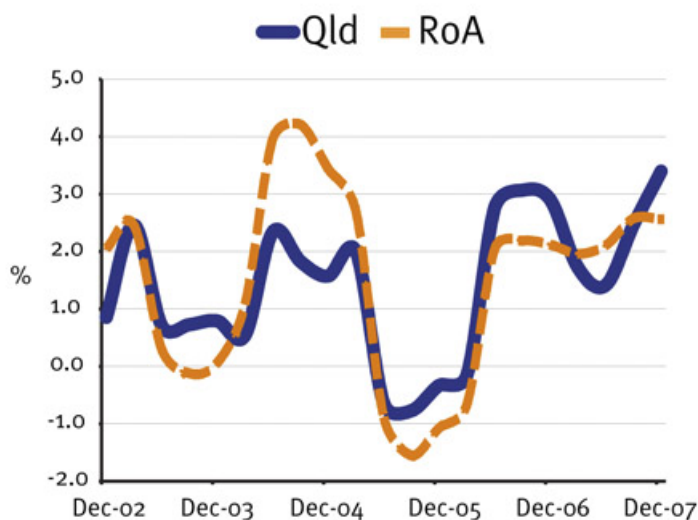
Labour productivity (output produced per unit of labour input) in Queensland has historically been lower than in other States and Territories. This is due to several factors. Firstly, higher growth of labour-intensive service industries (such as tourism and finance), which typically have lower levels of productivity.² Secondly, a relatively low capital to labour ratio (the quantity of capital stock available per worker). This is largely attributed to the relatively high job growth experienced in Queensland. Consequently, labour productivity levels have, on average, been around 5 to 10% lower in Queensland relative to the Rest of Australia over the last decade.

While labour productivity levels have been lower in Queensland relative to the Rest of Australia, the following graph shows that labour productivity growth rates are comparable between the two regions. Labour productivity growth in Queensland has exceeded that of Rest of Australia for seven of the last ten quarters to December quarter 2007, resulting in a slight

² Monitoring productivity in these sectors remains problematic due to difficulties measuring the value of output produced.

narrowing of the gap in labour productivity levels between Queensland and the Rest of Australia.

Labour productivity growth – annual average, Queensland and the rest of Australia (%)



Source: ABS 6202.0; Qld Treasury

State Accounts

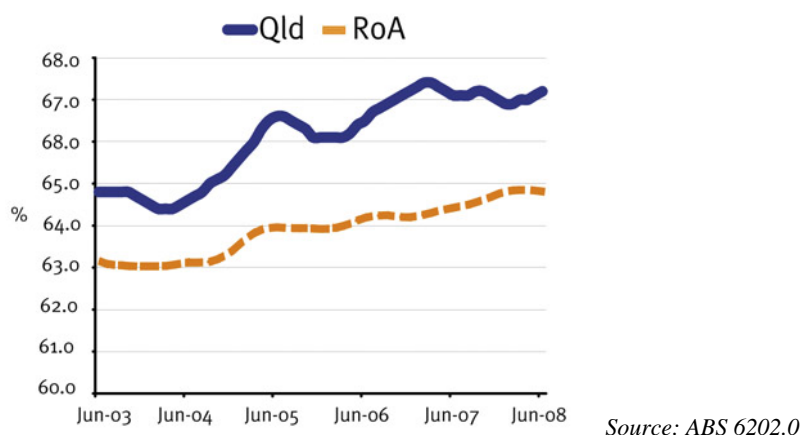
Labour force participation

The Queensland labour force participation rate rose marginally during June 2008, up 0.1 percentage points to 67.2%, while the participation rate in the Rest of Australia was steady at 64.8%. Annually, the participation rate remained steady in Queensland (at 67.1%), and rose by 0.4 percentage points in the Rest of Australia (to 64.7%).

Two longer term trends have emerged which drive faster growth in Queensland's participation rate relative to the Rest of Australia. First, Queensland has experienced relatively high net interstate migration compared to other States. This group has traditionally had a high participation rate relative to existing residents. Second, Queensland has seen a more rapid increase in female labour force participation. Consequently, the gap between the participation rate of Queensland and the Rest of Australia has widened in recent years, and averaged 2.4 percentage points over the year to June 2008.

Over the year to June 2008, there was a 0.1 percentage point increase in Queensland's female participation, to 60.6%. This was offset by a fall in male participation of 0.3 percentage points to 73.6%. During the same period, the increase in the Rest of Australia's participation rate was driven to a greater degree by increased female participation (up 0.6 percentage points to 57.5%) than by male participation (up 0.2 percentage points to 72.1%).

Participation rate – monthly, Queensland and the rest of Australia (%)



Hours worked

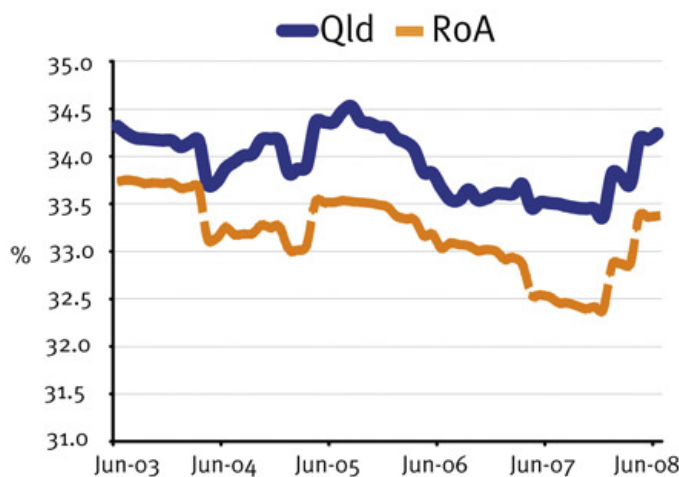
Average hours worked per week in Queensland rose marginally during June quarter 2008, up 1.3% to 34.2 hours per week, while in the Rest of Australia average hours worked rose 1.5% to 33.4 hours per week. Annually, average hours worked rose by 0.4% in Queensland in the year to June 2008 (to 33.7 hours per week), but fell by 0.3% in the Rest of Australia (to 32.8 hours per week).

The long term downward trend in aggregate average hours worked in Queensland reflects a trend towards increased part-time employment relative to full-time employment. This has increased the proportion of workers working fewer hours. There is, however, significant variation in growth of average hours worked by labour force status. Average hours worked of those in part-time employment has increased, although this has been offset by a fall in average hours worked for those in full-time employment. Average hours worked for females has risen relative to males, driven mainly by an increase in female labour force participation.

During the June quarter 2008, the increase in overall average hours worked in Queensland was driven mainly by increases in average hours worked for males (up 1.4% to 38.8 hours per week) and also for full-time workers (up 1.5% to 40.9 hours per week). In the Rest of Australia over the same period, increases in average hours worked for females (up 1.6% to 28.0 hours per week) and for full-time workers (up 1.6% to 40.2 hours per week) have also driven the increase in overall average hours worked.

In annual average terms, the increase in overall average hours worked in Queensland is driven by relatively larger increases in male and full-time hours (up 0.4% to 38.1 hours per week and 0.2% to 40.2 hours per week respectively). Conversely, the fall in overall average hours worked in the Rest of Australia results from relatively larger falls in male and full-time hours (down 0.4% to 37.1 hours per week and 0.5% to 39.5 hours per week respectively).

Average hours worked per week – annual average, Queensland and the rest of Australia



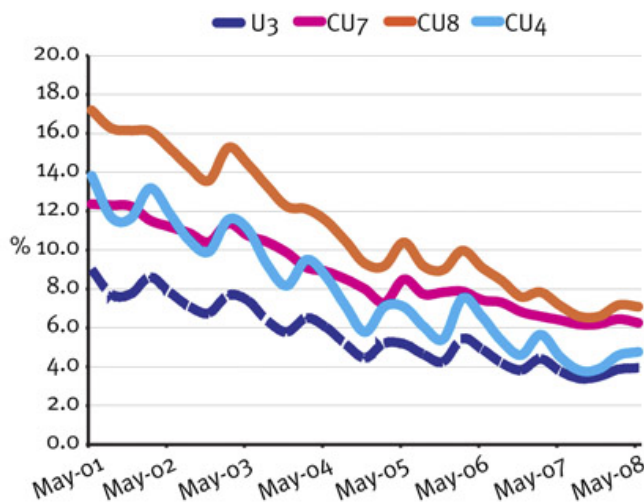
Source: ABS 6202.0

Labour underutilisation

The unemployment rate is the most commonly used measure of available labour resources not used in the economy. However, it does not fully represent the extent to which available labour resources are being wasted. Here, we present some broader measures that include groups of people whose labour is underutilised, such as underemployed workers and people marginally attached to the labour force.³

The following graph compares the official unemployment rate⁴ (denoted by U3) with several measures of labour underutilisation (denoted by CU4, CU7 and CU8) for Queensland. The definitions of these measures are provided in the text box below.

Labour underutilisation measures - quarterly, Qld (%)



Source: ABS 6202.0; DEIR estimates

The series shown indicate significant differences in the degree of labour underutilisation. The CU7 and CU8 measures are hours-based indicators of labour underutilisation, both of which display significant deviation from the person-based measures (U3 and CU4).

³ These measures are presented in 'volume' terms, ie. the number of hours of available labour in the economy that are not utilised.

⁴ In Original terms.

CU7 and CU8 account for the part-time workers (and, in CU8, discouraged jobseekers) that are unable to obtain full-time work or more part-time working hours. Both of these measures are higher than the official unemployment rate, indicating significant levels of underutilisation and underemployment. The gap between CU7 and CU8 reflects the extent of discouraged jobseekers in hours terms. This gap has narrowed in recent years as economic conditions have improved. This indicates that there are now fewer people not in the labour force that are willing to work and are available to start.

The following table compares these labour underutilisation measures for Queensland with national averages. In the May quarter 2008, all measures presented indicate that underutilisation remains lower than that experienced in other states and territories. The official unemployment rate (U3) for Queensland rose from 3.6% to 3.7% in annual average terms. Nationally, U3 remained steady at 4.2%. During the same period the hours-adjusted unemployment rate (CU7) was steady at 6.3% for Queensland and fell from 7.0% to 6.8% nationally. The CU8 measure, the most comprehensive underutilisation measure, was steady at 6.9% for Queensland and fell from 8.1% to 8.0% nationally.

In the May quarter 2008, the CU8 measure incorporated around 14,000 discouraged jobseekers for Queensland, up from 13,200 in annual average terms. During this period, discouraged jobseekers added 0.6 percentage points to the Queensland unemployment rate measured in hours terms.

Despite recent improvements, the data indicate that there remains a significant amount of labour underutilisation in the Queensland labour market. Significant potential output losses arise as a result of underutilisation of, on average, around 7% of available labour resources.

Labour underutilisation measures – annual average, Qld and Aust (%)

	May quarter 08	February quarter 08	November quarter 07	August quarter 07
U3				
Queensland	3.7	3.6	3.8	3.9
Australia	4.2	4.2	4.4	4.4
CU4				
Queensland	4.3	4.2	4.5	4.6
Australia	5.5	5.5	5.6	5.7
CU7				
Queensland	6.3	6.3	6.3	6.5
Australia	6.8	7.0	7.1	7.2
CU8				
Queensland	6.9	6.9	7.0	7.3
Australia	8.0	8.1	8.3	8.4

Source: ABS 6202.0; DEIR estimates; CoffEE Labour Market Indicators report

The following measures of labour underutilisation are compared in this section:

1. the official unemployment rate;
2. the official unemployment rate augmented by hidden unemployment estimates expressed in terms of persons – denoted CU4;
3. an hours-adjusted unemployment rate, being a ratio of underutilised labour (unemployed plus underemployed workers) to the potential labour force (the numerator plus full-time employed plus part-time workers who do not want to work more hours) – denoted CU7; and
4. an hours-adjusted unemployment rate including estimates of hidden unemployment – denoted CU8.

Wages

Labour price index

The Labour Price Index (LPI) measures changes in the price of labour in the Australian labour market. The LPI comprises of separate wage and non-wage indexes.⁵ The components of the LPI measure changes over time in the price of labour unaffected by changes in the quality or quantity of work performed. Therefore, the LPI is considered a more reliable indicator of wage trends than Average Weekly Ordinary Time Earnings (AWOTE). In this section, data is provided for the Wage Price Index (WPI), or wage component of the LPI.

For Queensland, the WPI grew by 0.8% in the March quarter 2008, down from 1.1% growth recorded in the December quarter. Nationally, the WPI grew by 0.9% during the March quarter, down marginally from 1.0% growth recorded in the December quarter.

In annual average terms, the Queensland WPI grew 4.4% in the March quarter 2008, down marginally from the 4.5% growth recorded in the December quarter. Nationally, the WPI increased by 4.1%, no change from the 4.1% recorded in the December quarter.

Queensland recorded the lowest overall WPI growth for the March quarter 2008 (0.8%), equal with the growth recorded in Northern Territory and Australian Capital Territory (0.8%). New South Wales, Victoria and Western Australia recorded the highest quarterly growth of 1.0%. In annual average terms, however, Queensland recorded the third highest WPI growth (4.4%) over the year to March 2008, below the growth recorded in Western Australia (5.7%) and South Australia (4.6%).

⁵ The non-wage components include annual and public holiday leave, superannuation, payroll tax and workers compensation.

Wage price index growth⁶ – Australia, States and Territories, Mar qtr 2008 (%)

	Quarterly growth	Annual average growth
NSW	1.0	3.8
VIC	1.0	3.7
QLD	0.8	4.4
SA	0.9	4.6
WA	1.0	5.7
TAS	0.9	4.1
NT	0.8	3.8
ACT	0.8	4.2
AUS	0.9	4.1

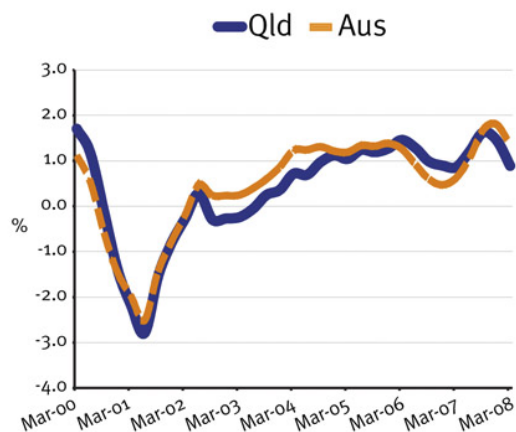
Source: ABS 6345.0

Real wage growth⁷

For Queensland, real wages fell by 0.5% in the March quarter 2008, down from 0.1% increase recorded in the December quarter. Nationally, real wages showed a 0.4% decline during the March quarter, down from no change in growth recorded in the December quarter.

In annual average terms, Queensland real wages grew 0.9% in the March quarter 2008, down from 1.5% growth recorded in the December quarter. Nationally, real wages increased by 1.3%, also down from 1.8% growth recorded in the December quarter.

Real wage growth – annual average, Qld and Aust (%)



Source: ABS 6345.0, 6401.0

The December quarter was the nineteenth consecutive quarter of positive real wage growth in Queensland in annual average terms. Recent slowing in the pace of real wage growth reflects both moderation in nominal wage growth and a pickup in headline inflation.

Real wage growth – annual average, Qld and Aust (%)

	Queensland	Australia
March quarter 2008	0.9	1.3
December quarter 2007	1.5	1.8
September quarter 2007	1.6	1.7
June quarter 2007	1.2	1.1

⁶ Total hourly rates of pay excluding bonuses.

⁷ Real wages growth is determined by comparing growth in wages, as measured by the Wage Price Index (WPI) relative to growth in inflation, as measured by the Consumer Price Index (CPI).

Source: ABS 6345.0, 6401.0

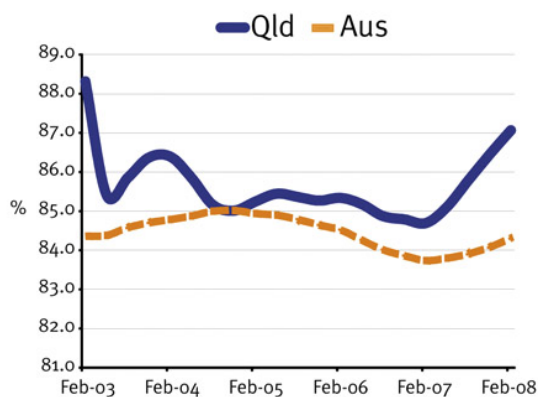
Gender wage relativities

The gender pay ratio, the ratio of female to male earnings (in percentage terms), is useful for measuring the degree of pay inequity between males and females. The graph below shows this ratio, derived using quarterly average weekly ordinary time earnings (AWOTE) for full-time adult employees.

Using the AWOTE data, the gender earnings ratio in Australia and Queensland is relatively high (that is, the gender pay gap is relatively low) as earnings attributable to overtime (in which women are under-represented) and to part-time work (in which women are over-represented) are excluded. So, this ratio represents the gap that exists between women and men in traditional full-time jobs.

The graph shows that in recent years, the gender wage gap in Queensland has been consistently lower than the national average. In the February quarter 2008, the gender wage gap in Queensland narrowed by 0.7 percentage points (to 87.1%). Nationally, the gender wage gap also narrowed, by 0.2 percentage points (to 84.3%). In annual average terms, the gap narrowed in Queensland, by 1.2 percentage points (to 86.1%). Nationally, the gap narrowed marginally by 0.1 percentage points to 84.0%.

Gender pay ratio – quarterly, Qld and Aust (%)



Source: ABS 6302.0

Labour market outlook

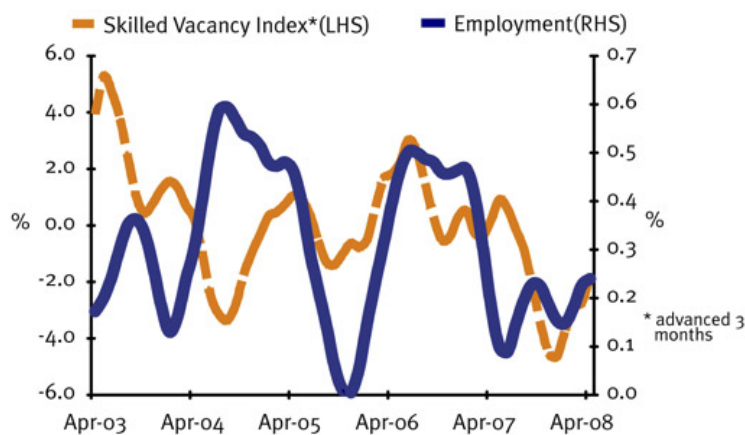
The outlook for the June quarter 2008 remains relatively positive, despite early signs of a slowing of domestic demand, mainly due to recent interest rate increases and volatile global stock market conditions. Consequently, some moderation of recent high employment growth and record low unemployment can be expected. Labour force participation, however, is expected to remain strong as higher living costs and household debt levels, along with recent reforms fostering retention of older workers, are likely to result in continuing high labour force entry.

Several indicators of consumer confidence confirm signs of a softening of domestic conditions. Trend total dwelling approvals fell by 6.1% in Queensland over the June quarter 2008, marginally below the 5.7% decrease in the March quarter. Trend retail turnover increased 0.4% in Queensland in the June quarter 2008, higher than the 0.1% increase in the March quarter, although the second lowest increase since December quarter 2004.

The Skilled Vacancies Index (SVI) published by DEEWR is based on a count of skilled vacancies in the major metropolitan newspaper of each State and the Northern Territory, usually on the first Saturday of each month. The trend SVI for Queensland fell 10.8% over the June quarter 2008. Nationally, the SVI fell 3.3% over the same period. In annual average terms, the SVI fell by 5.4% in Queensland, and by 4.7% nationally.

Job vacancies data provides an indicator of future demand for labour. Recent research indicates that job vacancies series act as a 'leading indicator' of employment growth by, on average, around 3 quarters. The graph below tracks the relationship between change in the number of job vacancies (advanced 3 quarters) and employment growth. The recent downward trend in the SVI appears consistent with other early signs indicating a moderation of employment growth in Queensland.

Skilled vacancies and employment growth – monthly, Qld (%)



Source: ABS 6202.0; DEEWR Skilled

Vacancies Index

For further information on age-specific, industry, occupational or regional employment trends, the *Queensland Labour Market and Training Review* can be accessed from the Labour Market Research Unit website:

www.trainandemploy.qld.gov.au/client/for_business_and_employers/labour_market_research/quarterly_review.html

Workplace health and safety

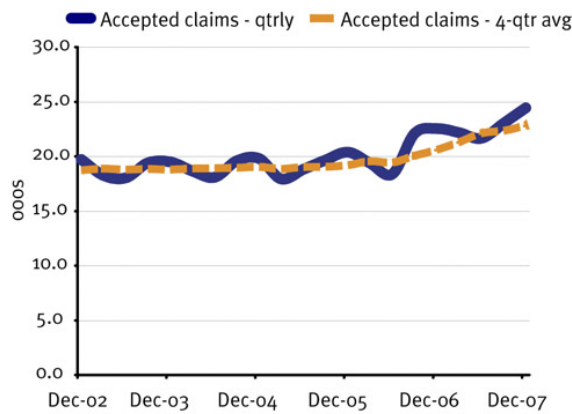
Workplace health and safety

Accepted workers' compensation claims (4-quarter average) in Queensland grew by 2.1% (to 22,825 claims) in the December quarter 2007,⁸ up from 1.0% growth recorded in the September quarter. In annual average terms, accepted claims grew by 11.2% in the December quarter 2007, up on the 10.3% growth recorded in the September quarter.

After accounting for the effects of recent employment growth on claims, the growth in accepted claims is significantly lower (averaging between zero and two percent over the most recent four quarters), assuming employees' propensity to claim remained stable.

⁸ At the time of publication, March quarter 2008 workers' compensation claims data was not yet available.

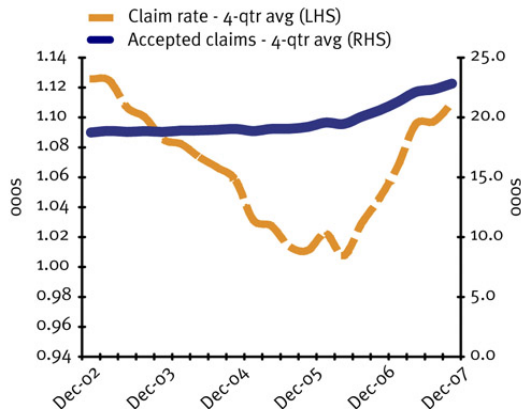
Workers' compensation claims – quarterly, Qld (000's)



Source: DEIR

In the December quarter 2007, the claim rate in Queensland grew 1.1% (to 1,109 claims per 100,000 employed persons), up from the 0.2% growth recorded in the September quarter. In annual average terms, the claim rate grew by 6.4%, up from the 5.8% growth recorded in the September quarter.

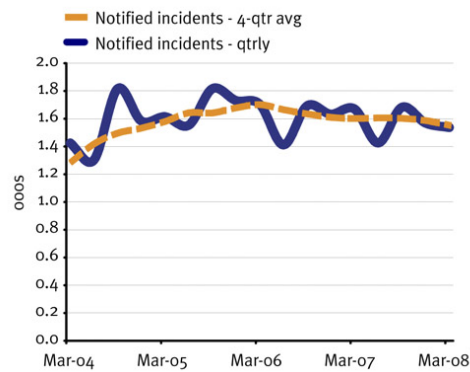
Workers' compensation claims and claim rate – quarterly, Qld (000's)



Source: ABS 6202.0; DEIR

Notified incidents (4-quarter average) in Queensland fell by 2.1% (to 1,554 incidents) in the March quarter 2008, down from the 1.0% fall recorded in the December quarter. In annual average terms, notified incidents fell by 2.5% in the March quarter 2008, up on the 3.3% fall recorded in the December quarter.

Notified incidents – quarterly, Qld (000's)



Source: DEIR

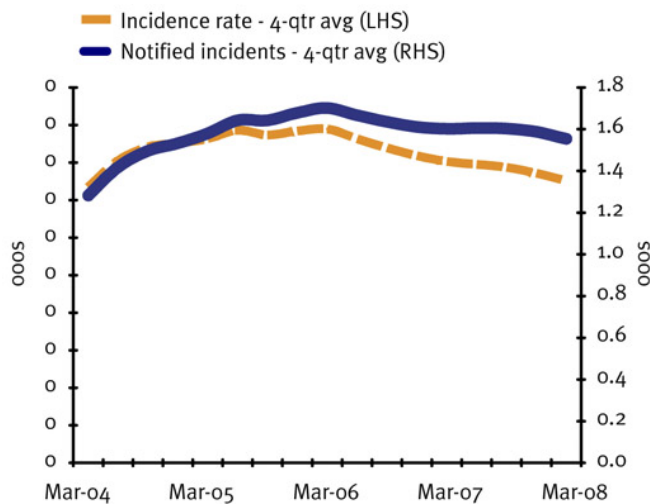
In the March quarter 2008, the incidence rate in Queensland fell 2.6% (to 75 incidents per 100,000 employed persons), down from the 2.0% fall recorded in the December quarter. In

annual average terms, the incidence rate fell by 6.6% in the March quarter 2008, up marginally from the 7.4% fall recorded in the December quarter.

Fatalities resulting from work-related injuries have mostly been stable over the last 5 years, despite continuing high population growth in Queensland relative to other states and territories.

Notified fatalities fell during the March quarter 2008, with 8 deaths recorded. Eleven deaths were recorded in the December quarter. However, notified fatalities rose over the year ended March quarter 2008 (as 35 deaths were recorded), 4 higher than the year ended March quarter 2007.

Notified incidents and incidence rate – quarterly, Qld (000's)



Source: DEIR

Overall, it appears plausible that existing safety programs have improved over time, but may now be subject to additional stress associated with labour shortages as the Queensland economy reaches full capacity.

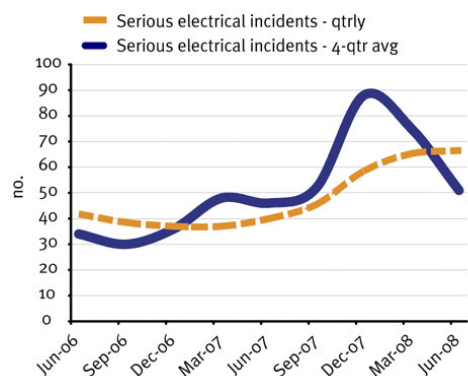
Workplace health and safety data definitions:

1. *Notified fatalities – all deaths resulting from work-related injuries, including those that occurred while travelling to and from work and bystanders killed as a result of another person's work activity. The notified fatalities represent the number reported to the Australian Safety and Compensation Council (ASCC);*
2. *Notified incidents (type 1 and 2) – all incidents occurring on duty and on break at the place of work resulting in serious injury (defined as injuries causing permanent or temporary impairment with 7 calendar days or more absence) and dangerous events (defined as dangerous incidents reported that did not result in injury);*
3. *Accepted claims – accepted claims for fatalities and serious injuries from wage and salary earners and eligible self employed workers. It includes all on duty and on break claims at the place of work. The mining industry and commuting claims, and on break away from the workplace are excluded;*
4. *Claim rate – the number of accepted claims expressed as a rate per one hundred thousand employees; and*
5. *Incidence rate – the number of notified incidents expressed as a rate per one hundred thousand employees.*

Electrical safety

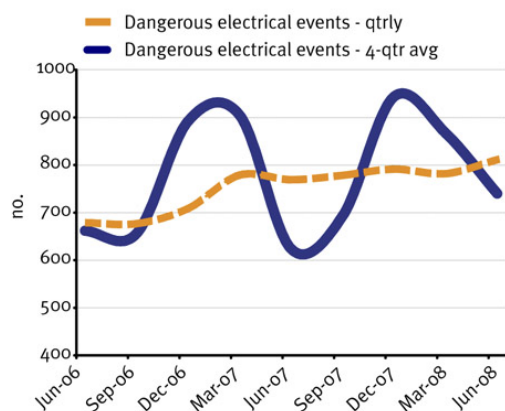
Trends in Electrical Safety data series are largely steady, with electricity-related fatalities stable, and a steady incidence rate over recent quarters.

Serious electrical incidents (4-quarter average) in Queensland grew by 1.9% (to 67 incidents) in the June quarter 2008, down from 11.5% growth recorded in the March quarter. In annual average terms, serious electrical incidents grew by 54.6% in the June quarter 2008, up from the 35.7% growth recorded in the March quarter.

Serious electrical incidents – quarterly, Qld (no.)

Source: DEIR

Dangerous electrical events (4-quarter average) in Queensland rose by 3.7% (to 811 events) in the June quarter 2008, up from a 1.2% decrease recorded in the March quarter. In annual average terms, dangerous electrical events rose by 7.8% in the June quarter 2008, down on the 9.8% growth recorded in the March quarter.

Dangerous electrical events – quarterly, Qld (no.)

Source: DEIR

In the December quarter 2007, the incidence rate in Queensland increased by 2.5% (to 20.1 incidents per 100,000 people), up from the 1.4% increase (to 19.6 per 100,000 people) recorded in the September quarter.⁹

Fatalities resulting from electricity-related injuries have mostly been stable over the last 5 years. Fatalities fell during the June quarter 2008, with 1 death recorded. Three deaths were recorded in the March quarter. Fatalities also fell over the year ended June quarter 2008 (as 5 were recorded), 1 lower than the year ended June quarter 2007.

Electrical safety data definitions:

1. Fatalities – all deaths resulting from electricity-related incidents;
2. Serious electrical incidents - all electricity-related incidents resulting in serious injury (defined as injuries causing permanent or temporary impairment);
3. Dangerous electrical events – all electricity-related events (defined as dangerous incidents reported that did not result in injury);
4. Incidence rate – the number of serious electrical incidents and dangerous electrical events expressed as a rate per one hundred thousand people; and
5. Fatality rate – the number of deaths resulting from electricity-related incidents expressed as a rate per one hundred thousand people.

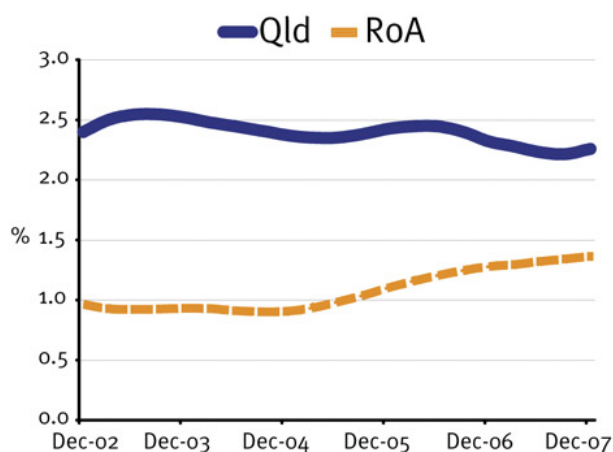
⁹ The incidence rate cannot be calculated for the two most recent quarters due to a lag in publication of the ABS estimated resident population data.

Population growth

Queensland's preliminary estimated resident population at 30 December 2007 was 4,228,290 persons, representing 20.0% of the Australian population. Queensland's population increased by 92,634 persons over the 12 months to 30 December 2007, compared with an increase of 92,974 persons in the previous 12-month period.

In the December quarter 2007, Queensland's population increased by 2.3% in annual average terms, significantly higher than the 1.4% growth experienced in the Rest of Australia. The population growth rates recorded in both Queensland and the Rest of Australia have increased 0.1 percentage points compared to those recorded in annual average terms for the September quarter 2007.

Estimated resident population growth – annual average, Queensland and the rest of Australia (%)



Source: ABS 3101.0

Residential dwelling completions

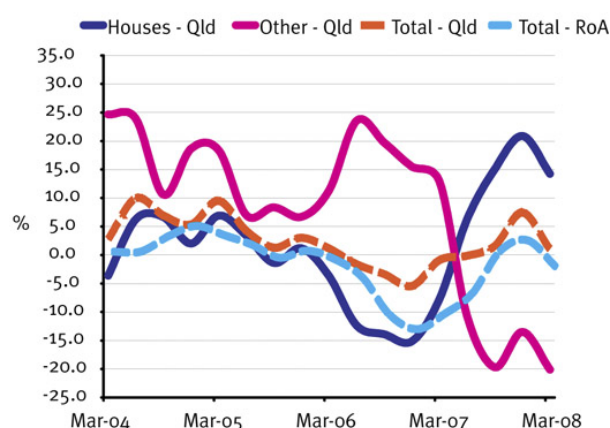
In the March quarter 2008, there were 8,325 residential dwellings completed in Queensland, a fall of 35.0% from 12,803 in December quarter 2007. The decrease in total residential dwellings comprised of falls in houses (down 32.6% to 5,557) and other dwellings (down 39.9% to 2,732).¹⁰ In the Rest of Australia, there were 22,795 residential dwellings completed in the March quarter 2008, a decrease of 22.4% from 29,375 in the December quarter.

There were 39,431 residential dwellings completed in Queensland over the year to March quarter 2008, a fall of 2.6% from 40,481 over the year to December quarter. The fall in total residential dwellings comprised of falls in houses (down 1.3% to 27,355) and other dwellings (down 5.5% to 11,994).

In the Rest of Australia, there were 108,146 residential dwellings completed over the year to March quarter 2008, a decrease of 3.4% from 111,925 over the year to December quarter. Over the year to March quarter 2008, total residential dwellings completed in Queensland accounted for 26.7% of residential dwellings completed nationally.

¹⁰ Residential dwelling unit completions comprise of new houses, new other residential buildings and conversions. A new other residential building is a building other than a house primarily used for long-term residential purposes and which contains (or has attached to it) more than one dwelling unit (e.g. blocks of flats). A conversion is building activity which converts a non-residential building to a residential building (e.g. conversion of a warehouse to residential apartments). Due to the small number of conversions each quarter, this category is not included here.

Residential dwelling unit completions growth – annual average, Queensland and the rest of Australia (%)



Source: ABS 8752.0

Significant infrastructure and projects¹¹

Name of project	Direct employment impact ¹²		DEIR region
	Construction phase	Operation phase	
Guthalungra aquaculture	200 jobs	273 jobs	North Qld
Abbot Point coal terminal	950 jobs	390 jobs	North Qld
Clermont coal mine	565 jobs	450 jobs	Central Qld
Qld coke and power plant	1,200 jobs	145 jobs	Central Qld
Wiggins Island coal terminal	650 jobs	N/A	Central Qld
LemonTree ethanol	100 jobs	51 jobs	South West Qld
Central Qld gas pipeline	300 jobs	N/A	Central Qld
North Qld gas pipeline	280 jobs	N/A	North Qld
Caltex refinery upgrade	255 jobs	N/A	Brisbane North
Spring Gully power station	400 jobs	30 jobs	South West Qld
Barrick Osborne magnetite	45 jobs	25 jobs	North Qld
Moranbah ammonium nitrate	550 jobs	70 jobs	Central Qld
Gladstone pacific nickel refinery	4350 jobs	435 jobs	Central Qld
Gladstone – Fitzroy pipeline	200 jobs	10 jobs	Central Qld
Hinze dam stage 3	450 jobs	N/A	Brisbane South/Gold Coast
Northern pipeline inter-connector stage 1	150 jobs	N/A	Wide Bay/ Sunshine Coast
Northern pipeline inter-connector stage 2	200 jobs	20 jobs	Wide Bay/ Sunshine Coast
Southern regional water pipeline	150 jobs	N/A	South East Qld
Traveston crossing dam	500-600 jobs	N/A	Wide Bay/ Sunshine Coast
Wyaralong dam	350 jobs	N/A	Brisbane South/Gold Coast

¹¹ This list is not exhaustive. Included are only those significant projects for which direct employment impacts have been quantified via the Environmental Impact Statement (EIS) process.

¹² In full-time equivalent (FTE) terms.

Name of project	Direct employment impact ¹²		DEIR region
	Construction phase	Operation phase	
Nathan dam	200 jobs	N/A	Central Qld
Gold Coast marine precinct	2800 jobs	2500 jobs	Brisbane South/Gold Coast
Moura – Aldoga rail link	350 jobs	550 jobs	Central Qld
Northern missing link rail	300 jobs	N/A	Central Qld
Surat basin rail	600 jobs	N/A	Central/South West Qld
Airport link tunnel	615 jobs	N/A	Brisbane North
Northern link tunnel	1500 jobs	N/A	Brisbane North
Dent Island golf resort	600 jobs	100 jobs	North Qld
Ella Bay integrated resort	1800 jobs	655 jobs	North Qld
Hummock Hill Island development	350 jobs	700 jobs	Central Qld
Hook Island wilderness resort redevelopment	75 jobs	50 jobs	North Qld
i-METT multi-functional redevelopment	2000 jobs	5000 jobs	Brisbane South/Gold Coast
Port of Airlie marina	195 jobs	300 jobs	North Qld
Shute Harbour marina	200 jobs	148 jobs	North Qld
Townsville ocean terminal	1900 jobs	55 jobs	North Qld

Source: www.dip.qld.gov.au/key-infrastructure/index

Enquiries: Justin Hartley
 Labour Market Analysis Team
 Strategic Projects and Performance Management Branch
 Ph: 3405 6478
 Email: justin.hartley@deir.qld.gov.au